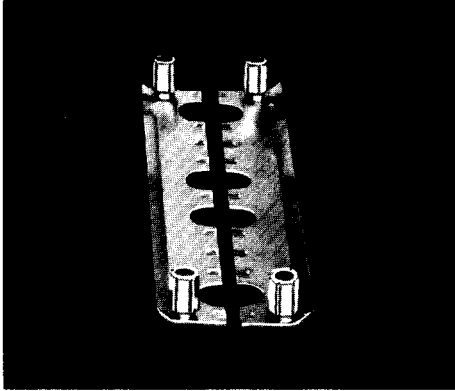


SR 1010 resistance transfer standard



SB 103 shorting bars



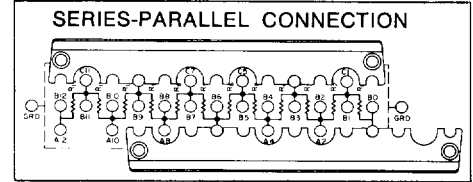
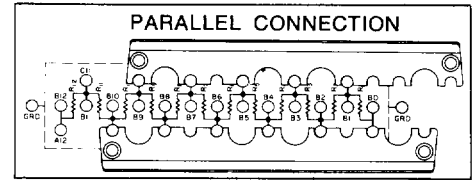
The Model SB 103 Shorting Bars are used to connect any number of resistors in the Model SR 1010 Resistance Transfer Standard in parallel or nine resistors in series-parallel. They may be used by themselves or in conjunction with the Model PC 101 or SPC 102 networks. The resistance that must be added to the value calculated from the individual resistor values is given in the accompanying table for two- and four-terminal measurements.

Resistance: Approx 100 $\mu\Omega$ /bar end to end.

Maximum Current: 10 A/bar.

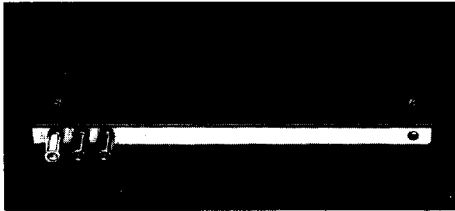
Dimensions (Each Bar): Width 9.5 in. (24.1 cm), height 1.4 in. (3.55 cm), depth 0.8 in. (2.03 cm).

Weight (Pair): 8 oz (230 gm).



MEASUREMENT AND ACCESSORY	10 RESISTORS IN PARALLEL (0.1R)	9 RESISTORS IN SERIES-PARALLEL (R)
TWO-TERMINAL SB 103	150 \pm 30 $\mu\Omega$	300 \pm 60 $\mu\Omega$
FOUR-TERMINAL SB 103 and PC 101 or SPC 102	0 \pm 0.1 $\mu\Omega$	0 \pm 1 $\mu\Omega$
SB 103 alone	50 \pm 10 $\mu\Omega$	200 \pm 40 $\mu\Omega$

PC 101 parallel compensation network



The Model PC 101 Parallel Compensation Network is used in addition to the Model SB 103 Shorting Bars for the four-terminal parallel connection of 10 low-value resistors in the Model SR 1010 Resistance Transfer Standard.

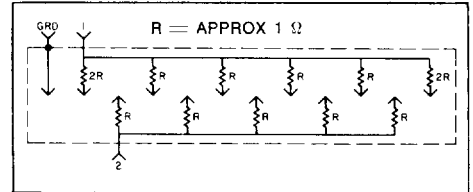
Effective Accuracy: Effect of connection resistances on four-terminal parallel value less than $\pm 0.1 \mu\Omega$.

Maximum Current: 2 A.

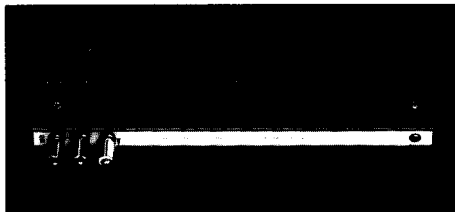
Breakdown Voltage: 1500 V peak to case.

Dimensions: Width 12 in. (30.5 cm), height 1 in. (2.5 cm), depth 3.2 in. (8.1 cm).

Weight: 1 lb (450 gm).



SPC 102 series-parallel compensation network



The Model SPC 102 Series-Parallel Compensation Network is used in addition to the Model SB 103 Shorting Bars for the four-terminal series-parallel connection of nine low-value resistors in the Model SR 1010 Resistance Transfer Standard.

Effective Accuracy: Effect of connection resistances on four-terminal series-parallel value less than $\pm 1 \mu\Omega$.

Maximum Current: 2 A.

Breakdown Voltage: 1500 V peak to case.

Dimensions: Width 12 in. (30.5 cm), height 1 in. (2.5 cm), depth 3.2 in. (8.1 cm).

Weight: 1 lb (450 gm).

