

OptiView™ Reporter Features

- Access OptiView™ analyzer data remotely
- Immediate or delayed acquisition modes
- Generates test reports in HTML format
- Integrates multiple OptiView™ measurements in an open database
- Easy to configure
- Simple installation

Reports Include

- IP Inventory
- NetBIOS Inventory
- Protocol Mix
- Top Protocols and Applications by Host
- Top Talkers
- Ethernet Network Utilization over time
- Ethernet Collision and Error Summary

OptiView™ Reporter

Ethernet Network Reporting Software

FLUKE
networks

OptiView™ Reporter

Ethernet Network Reporting Software

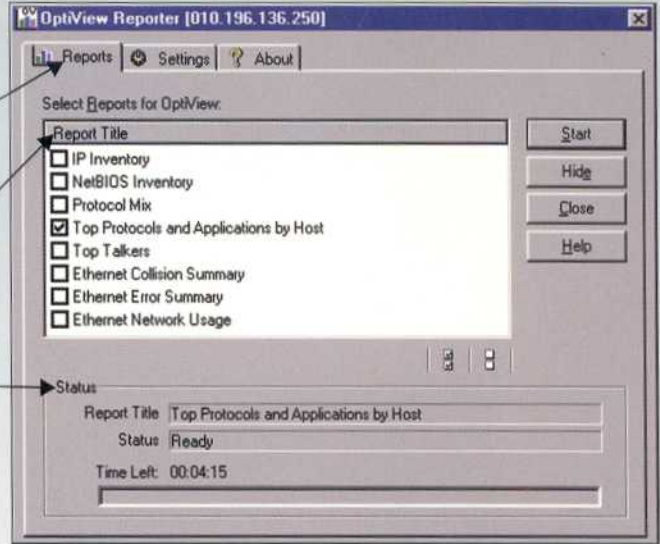
PC System Requirements

- Windows® 2000, Windows® 98, or Windows NT® version 4, Service Pack 5 or higher
- Microsoft TCP/IP stack
- Winsock 2.0
- 200 MHz Pentium II processor
- 64 MB RAM
- 150 MB virtual memory
- 100 MB hard disk space

Reports Tab
Measurement results from the OptiView™ analyzer may be used to generate reports.

Report types that can be generated.

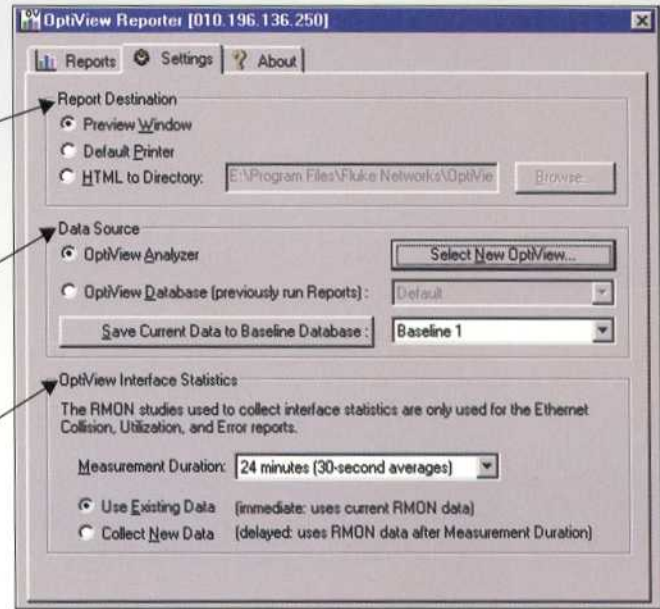
Report generation status.



Settings Tab
Defines the location where the reports will be sent.

Defines the data source and saves current data to Reporter database.

Defines immediate or delayed acquisition mode for report generation.



OptiView™ Reporter

Ethernet Network Reporting Software