



Product Dimensions: Weight: 2.5 kg
 Width×Height×Depth = 232mm×107mm×291mm

Application

1. Manufacturing Test
2. High Speed, High Resolution Data Acquisition
3. Signal Monitoring
4. User Defined Test
5. Aging Test

Model	DM3051	DM3052	DM3054
Resolution	5 3/4 digits		
Configuration	Null	LAN/GPIB	LAN/GPIB and IM
Model	DM3061	DM3062	DM3064
Resolution	6 1/2 digits		
Configuration	Null	LAN/GPIB	LAN/GPIB and IM

Advanced Features

1. Test resolution: 6 1/2 digits (2,400,000-count), 5 3/4 digits (400,000-count)
2. 50 K/s maximum sample rate, 2M points of memory depth
3. 256 × 64 pixels LCD display to support multi-display and screen menu
4. 16 channels Multiplexer Module and Ultralogger software
5. 26 test functions: DC voltage and current, AC voltage and current, 2-wire and 4-wire resistance, Capacitance, Continuity Test, Diode Test, Frequency, Period, Ratio Test, Temperature, Any Sensor Test, High Limit, Low Limit and High/Low Limit, Math: Max, Min, Avg, Null, dBm, dB, Data Acquisition: Data Record, Inspection, Programmable Automatic Measurements
6. Input resistance > 10 GΩ: DC voltage range up to 48 V (± 24 V)
7. True RMS AC voltage and current test
8. Built in Storage: Store up to 10 setup configurations, 10 data records and 10 sensor setups
9. I/O: GPIB, LAN, RS-232, USB Device
10. Integrated USB Host to support USB flash memory and USB printer
11. Control software that is both easy and flexible to use

Multiplexer Module

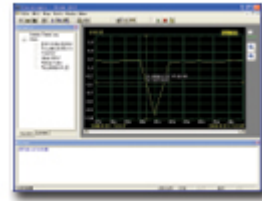
The module provides up to 16 Channels of acquisition. The easy to use software allows the user to scan any or all of the 16 channels and place into memory.



External View of Multiplexer Module



Internal View of Multiplexer Module



Ultralogger Data Acquisition Software Interface

Standard Accessories



Power Cord



Test Lead Kit



USB Data Wire

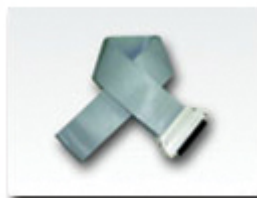


User Manual

DM3054 & DM3064 Additional Accessories



Inspection Module



Data Connection Cable

Optional Accessories



RS-232 Cable

Performance Characteristics

DM306x			
Range: Or Performance Parameters	Resolution, Or AC Voltage Frequency:	Accuracy: 1 Year± (% of reading + % of range)	Input Current, Or Input Resistance:
DC Voltage			
200.000,0 mV	100nV	0.0050+ 0.0017	10MΩ or>10GΩ
2.000,000 V	1μV	0.0040+ 0.0004	10MΩ or>10GΩ
20.000,00 V	10μV	0.0035+ 0.0003	10MΩ or>10GΩ
200.000,0 V	100μV	0.0045+ 0.0003	10MΩ
1000.000 V	1mV	0.0045+ 0.0005	10MΩ
DC Current			
2.000,000 mA	1nA	0.005 + 0.005	50Ω
20.000,00 mA	10nA	0.005 + 0.004	50Ω
200.000, 0 mA	100nA	0.03 + 0.003	1Ω
1.000,000 A	1μA	0.03 + 0.006	1Ω
10.000,00 A	10μA	0.05 + 0.01	0.01Ω
AC Voltage (RMS)			
200.000 mV To 750.000 V	3Hz-5Hz	1.00 + 0.01	1MΩ
	5Hz-10Hz	0.35 + 0.01	
	10Hz-20kHz	0.04 + 0.01	
	20kHz-50kHz	0.10 + 0.02	
	50kHz-100kHz	0.55 + 0.04	
	100kHz-300kHz	1.20 + 0.25	
AC Current(RMS)			
20.000,0mA To 10.000,0A	3Hz-10Hz	0.35 + 0.02	50Ω/20.000, 0 mA
	10Hz-5kHz	0.10 + 0.04	1Ω/200.000 mA
	5kHz-10kHz	0.20 + 0.04	1Ω/1.000, 00 A
0.02Ω/10.000,0 A			
Resistance (2-wire and 4-wire)			
200.000,0Ω	100μΩ	0.010 + 0.0020	1mA
2.000,000 kΩ	1mΩ	0.010 + 0.0005	1mA
20.000,00 kΩ	10mΩ	0.010 + 0.0005	100μA
200.000,0 kΩ	100mΩ	0.010 + 0.0005	10μA
2.000,000 MΩ	1Ω	0.010 + 0.0005	1μA
10.000,00 MΩ	10Ω	0.040 + 0.0005	200nA
100.000,0 MΩ	100Ω	0.080 + 0.0005	200nA
Capacitance			
2.000,0 nF	0.1pF	0.50 + 0.20	200nA
20.000 nF	1pF	0.40 + 0.05	1μA
200.00 nF	10pF	0.40 + 0.05	10μA
2.000,0 μF	100pF	0.40 + 0.05	100μA
20.000 μF	1nF	0.40 + 0.05	1mA
200.00 μF	10nF	0.10 + 0.05	1mA

Other Parameters			
Continuity	2 K Ω Range, Threshold Range 1 Ω -2 K Ω		
Diodes test	2 V Range, 1mA test current, 2.4 V Max forward voltage drop		
Arbitrary Sensor	Support multiple ANSI standard thermocouple and the sensor with voltage, current, and resistance output		
Frequency and Period	3Hz(0.333s)-300k Hz(3.33 μ s)		
Math	Null, Max/Min/Avg, dBm, dB, and Limit Test		
Data Acquisition	Data Record, Inspection, Programmable Auto Measure		
Other Functions	Auto Reading Hold, Ratio Test, Built-in 10 setup storage, 1 M points of memory depth		
High-speed Data Logger	50KSPS (High-speed Data Logger)		
Measurement Precision	2,400,000 Count, >6 ?		
USB I/O Interface	USB Host , support USB disk and USB printer; USB Device		
Other I/O Interfaces	RS232, GPIB (Optional), LAN (Option)		
Display	256 \times 64 pixels LCD to support multi-display, menu, multi-language help and waveform display		
Data Acquisition and Virtual	Support Microsoft? Windows 98, Windows Me, Windows 2000, Windows XP.		
Max Input	1,000 VDC, 750 VACRMS, DC&AC max external current 10 A, internal current 2 A double fuses		
Shock and Vibration	MIL-T-28800, Type III, Class 5		
Power	AC 115/230V, 45-65Hz, 20W Max		
Weight	2.5kg		
Size	107.0mmH \times 231.6mmW \times 290.5mmD		
DM305x			
Range: Or Performance Parameters	Resolution, Or AC Voltage Frequency:	Accuracy: 1 Year \pm (% of reading + % of range)	Input Current, Or Input Resistance:
DC Voltage			
400.000 mV	1 μ V	0.025 + 0.002	10M Ω or >10G Ω
4.000,00 V	10 μ V	0.025 + 0.002	10M Ω or >10G Ω
40.000,0 V	100 μ V	0.025 + 0.002	10M Ω or >10G Ω
400.000 V	1mV	0.025 + 0.002	10M Ω
1000.00 V	10mV	0.025 + 0.002	10M Ω
DC Current			
4.000,00 mA	10nA	0.02 + 0.02	50 Ω
40.000,0 mA	100nA	0.05 + 0.01	50 Ω
400.000 mA	1 μ A	0.05 + 0.002	1 Ω
4.000,00 A	10 μ A	0.20 + 0.002	1 Ω
10.000,0 A	100 μ A	0.25 + 0.002	0.01 Ω
AC Voltage(RMS)			
200.00 mV To 750.00 V	3Hz-5Hz	1.00 + 0.05	1M Ω
	5Hz-10Hz	0.50 + 0.05	
	10Hz-20kHz	0.40 + 0.05	
	20kHz-50kHz	1.00 + 0.05	
	50kHz-100kHz	3.00 + 0.10	
	100kHz-300kHz	1.20 + 0.20	

AC Current(RMS)			
20.000 mA To 10.000 A	3Hz-10Hz	1.50 + 0.04	50Ω/20.000mA
	10Hz-5kHz	0.50 + 0.04	1Ω/200.00mA
	5kHz-10kHz	2.00 +0.10	1Ω/1.000,0A
			0.02Ω/10.000 A
Resistance (2-wire and 4-wire)			
400.000Ω	1mΩ	0.05 + 0.002	1mA
4.000,00 kΩ	10mΩ	0.05 + 0.002	1mA
40.000,0 kΩ	100mΩ	0.05 + 0.002	100μA
400.000 kΩ	1Ω	0.05 + 0.002	10μA
4.000,00 MΩ	10Ω	0.06 + 0.002	1μA
100.000 MΩ	1kΩ	2.00 + 0.002	200nA
Capacitance			
4.000 nF	0.1pF	2.0 + 0.2	200nA
40.00 nF	1pF	1.0 + 0.2	1μA
400.0 nF	10pF	1.0 + 0.2	10μA
4.000 μF	100pF	1.0 + 0.2	100μA
40.00 μF	1nF	1.0 + 0.2	1mA
200.0 μF	10nF	1.0 + 0.2	1mA
Other Parameters			
Continuity	2 KΩ Range, Threshold Range 1 Ω-2 KΩ		
Diodes test	2 V Range, 1mA test current, 2.4 V Max forward voltage drop		
Arbitrary Sensor	Support multiple ANSI standard thermocouple and the sensor with voltage, current, and resistance output		
Frequency and Period	3Hz(0.333s)-300k Hz(3.33μs)		
Math	Null, Max/Min/Avg, dBm, dB, and Limit Test		
Data Acquisition	Data Record, Inspection, Programmable Auto Measure		
Other Functions	Auto Reading Hold, Ratio Test, Built-in 10 setup storage, 1 M points of memory depth		
High-speed Data Logger	50KSPS (High-speed Data Logger)		
Measurement Precision	2,400,000 Count, >6 ?		
USB I/O Interface	USB Host , support USB disk and USB printer; USB Device		
Other I/O Interfaces	RS232, GPIB (Optional), LAN (Option)		
Display	256×64 pixels LCD to support multi-display, menu, multi-language help and waveform display		
Data Acquisition and Virtual	Support Microsoft? Windows 98, Windows Me, Windows 2000, Windows XP.		
Max Input	1,000 VDC, 750 VACRMS, DC&AC max external current 10 A, internal current 2 A double fuses		
Shock and Vibration	MIL-T-28800, Type III, Class 5		
Power	AC 115/230V, 45-65Hz, 20W Max		
Weight	2.5kg		
Size	107.0mmH×231.6mmW×290.5mmD		